



**TITAN**  
HYUNDAI FORKLIFTS AUSTRALIA

12/14/18WS

Electric Walkie Stacker 1.2t/1.4t/1.8t  
New Choice of Electric Walkie Stackers

# N FEATURE

## Performance:

- The innovative AC system offers strong power, accurate control, excellent performance.
- High strength vertical gearbox, longer working life.
- Low-noise but durable hydraulic unit, good quality cylinders and hoses ensure the high reliability of hydraulic system.
- AMP connector and durable electric wires greatly reduce malfunctions of components.
- H shape mast channel improves the strength of the whole truck.
- Straddle design ensures the stability of high lifting.



## Operation:

- With the new design of ergonomical tiller head, all buttons can be reached conveniently & comfortably.
- Long tiller reduces the steering force greatly.
- Adjustable forks, suitable for complicated pallets or cargos.
- Creep speed function: when tiller is on near vertical position, the driving speed will decrease automatically, allowing delicate operation in confined space.
- Side-open battery design for easy battery replacement and various applications.

## Safety:

- Fail-safe hydraulic system design prevents mast from falling in the event of hydraulic failure.
- Emergency reverse belly button protects the operator from getting hurt.
- Emergency button will cut off power source to avoid operator injury.
- Multiple lifting limit protection ensures safety.
- Automatic mast switch to lower the speed when the forks are at height.
- Anti-rolling back holds the truck on an incline.
- Long operational tiller ensures safety distance for operators.

## Maintenance:

- AC traction motor, maintenance free.
- Hour meter and battery indicator remind the operator of battery charging.
- Easily remove the back cover by only loosening four bolts; Access to all key components for inspection, maintenance and replacement.
- Vertical motor makes the inspection and service much more convenient.
- Control system allows easy trouble-shooting.
- Mast and chassis are assembled together, easy for maintenance.
- Low voltage cut off setting protects batteries.

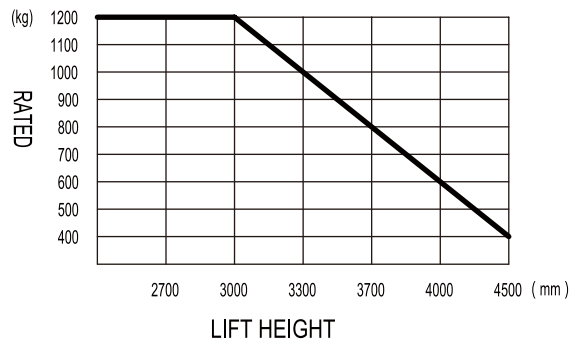
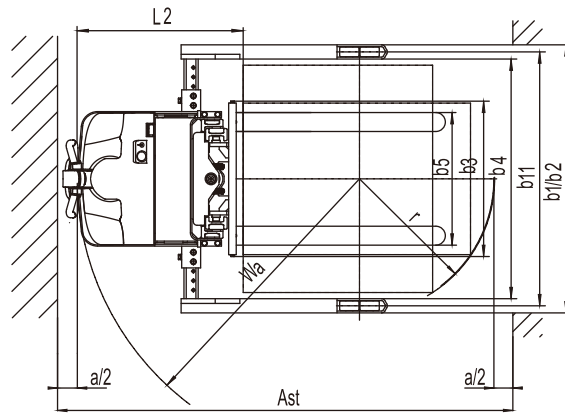
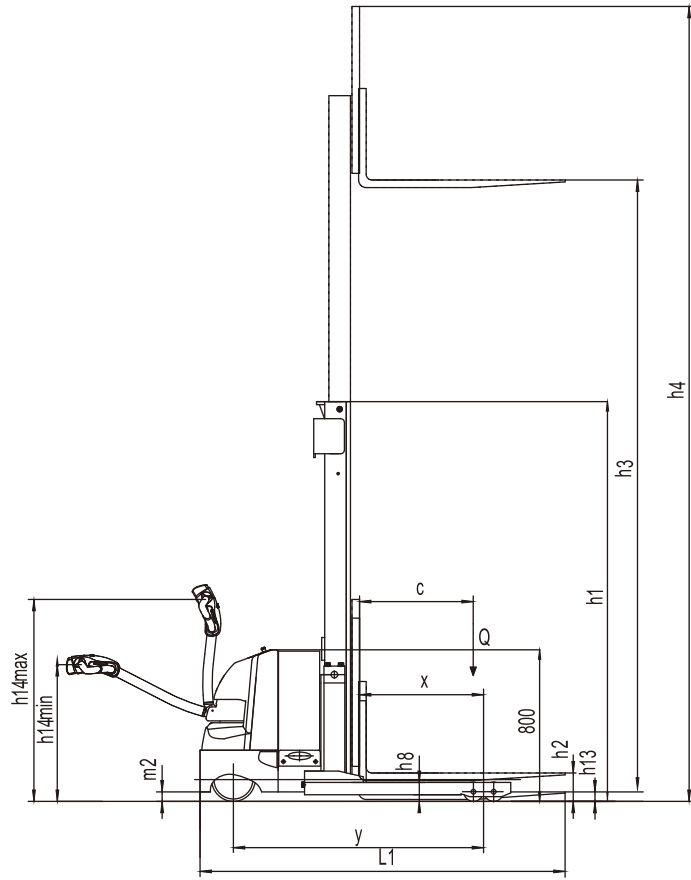
## Distinguishing Mark

1.2	Model designation			12WS	14WS	18WS
1.3	Drive unit			Electrics	Electrics	Electrics
1.4	Operator type			Pedestrian	Pedestrian	Pedestrian
1.5	Rated capacity	Q	kg	1200	1400	1800
1.6	Load center distance	c	mm	600	600	600
1.8	Load distance	x	mm	618	610	610
1.9	Wheelbase	y	mm	1320	1350	1455
<b>Weight</b>						
2.1	Service weight ( include battery )		kg	1150	1320	1520
2.2	Axle loading, laden driving side/loading side		kg	685/1525	815/515	945/2375
2.3	Axle loading, unladen driving side/loading side		kg	805/515	805/515	925/595
<b>Types, Chassis</b>						
3.1	Tyre type, driving wheels / loading wheels			PU / PU	PU / PU	PU / PU
3.2	Tyre size, driving wheels (diameter x width)		mm	φ 230x75	φ 230x75	φ 230x75
3.3	Tyre size, loading wheels (diameter x width)		mm	φ 102x50	φ 102x73	φ 102x73
3.4	Tyre size, caster wheels (diameter x width)			-	φ 85x48	φ 102x63.5
3.5	Wheels, number driving, caster/loading (x=drive wheels)		mm	1x+0/4	1x+2/4	1x+2/4
3.6	Track width, front, driving side		mm	-	580	580
3.7	Track width, rear, driving side		mm	1045/1145/1245/1345	1170/1270/1370	1170/1270/1370
<b>Dimensions</b>						
4.2	Height, mast lowered		mm	2110	2118	2118
4.3	Free lift		mm	150	150	150
4.4	Lift height		mm	3270	3200	3200
4.5	Height mast extended		mm	4185	4115	4115
4.9	Height drawbar in driving position min./max.		mm	715/1200	990/1500	990/1500
4.10	Height of wheel arms		mm	100	100	100
4.15	Lowered height		mm	60	60	65
4.19	Overall length		mm	1947	1987	2092
4.20	Length to face of forks		mm	877	917	1022
4.21	Overall width		mm	1120/1420	850/1270/1370/1470	850/1270/1370/1470
4.22	Fork dimensions		mm	40/100/1070	40/100/1070	45/100/1070
4.24	Fork carriage width		mm	800	800	800
4.25	Distance between fork-arms		mm	200-760	200-760	200-760
4.26	Ground clearance laden below mast		mm	970-1270 (adjustable)	1070/1170/1270	1070/1170/1270
4.32	Ground clearance centre of wheelbase		mm	60	50	50
4.34.1	Aisle width for pallets 1000 x 1200 crossways		mm	2405	2460	2560
4.34.2	Aisle width for pallets 800 x 1200 lengthways		mm	2400	2460	2560
4.35	Turning radius		mm	1490	1545	1645
<b>Performance data</b>						
5.1	Travel speed, laden/ unladen		km/h	5.0/5.5	5.5/6.0	4.5/5.0
5.2	Lifting speed, laden/ unladen		m/ s	0.127/0.23	0.127/0.23	0.127/0.23
5.3	Lowering speed, laden/ unladen		m/ s	0.26/0.20	0.26/0.20	0.26/0.20
5.8	Max. gradeability, laden/unladen		%	8/16	8/10	6/10
5.10	Service brake type			Electromagnetic	Electromagnetic	Electromagnetic
<b>Electric-engine</b>						
6.1	Drive motor rating S2 60min		kW	1.1	1.1	1.1
6.2	Lift motor rating at S3 15%		kW	2.2	2.2	2.2
6.3	The maximum allowed size battery		mm	650/225/open	800/230/open	800/330/open
6.4	Battery 1.0ltage/nominal capacity K5		V/Ah	0.26/0.20	24/210	24/280
6.5	Battery weight		kg	160	190	250
<b>Additional data</b>						
8.1	Type of drive control			AC	AC	AC
10.5	Steering type			Mechanical	Mechanical	Mechanical
10.7	Sound pressure level at the driver's ear		dB(A)	74	74	74

1. The parameters in the table are of the standard model. For more information, please contact us.

2. The parameters are subject to change without notice.

# 12WS Rated Capacities Graph



## Mast Option

### 12WS

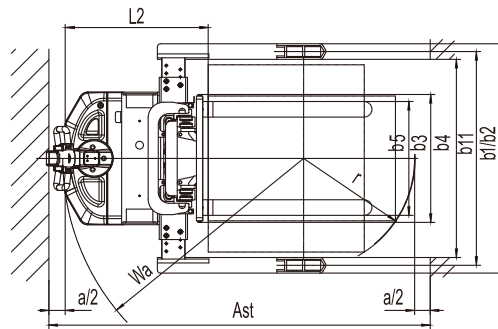
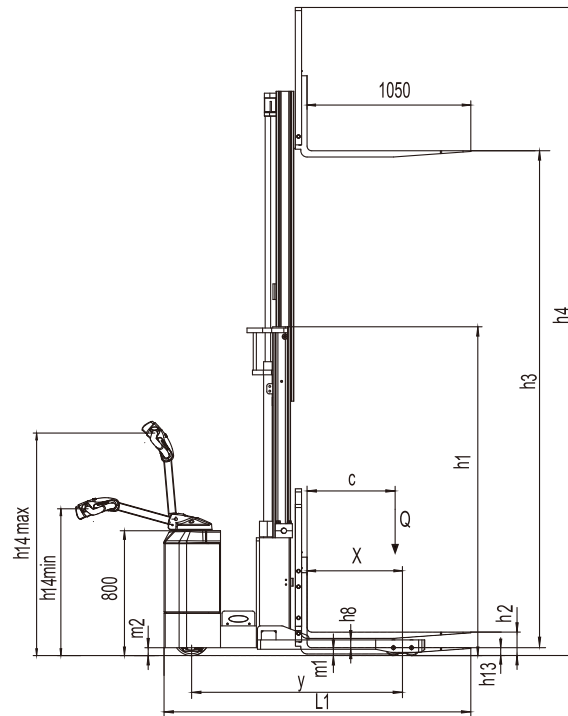
Mast Types	Lift h3+h13 (mm)	Lowered mast height h1 (mm)	Free lift h2 (mm)	Extended mast height h4 (mm)
Duplex ZT	2470	1710	150	3385
	2670	1810	150	3585
	2970	1960	150	3885
	3270	2110	150	4185
	3470	2210	150	4385
	3570	2260	150	4485
Triplex DZ	3670	2310	150	4585
	3870	2410	150	4785
	4000	1822	904	4915
	4500	2022	1104	5415
	4800	2122	1204	5715
	5000	2187	1269	5915

## Options

Options	12WS
3 Fork length	l 1070
4 Fork width	l 200-760(adjustable)
10 Driving wheel	l PU ; Rubber Wheel
11 Balance wheel	; Counter weights
15 Cold storage	i
16 Mast screen	i
17 Battery Indicator with hour meter	l
18 Battery Indicator without hour meter	i
19 Battery capacity	; 224AH (Maintenance-free)
20 Lateral change battery	i
22 Water auto-filling system	i
25 Vertical handler working	i
26 Proportional lifting	i
27 Height limitation	l
30 Side shift	-
31 Half soeed function in turning	-
32 Guard arm	-

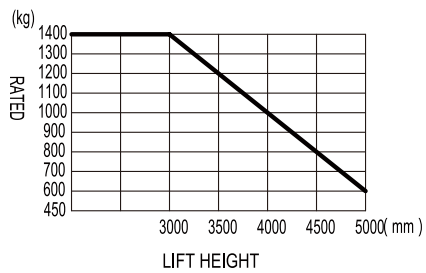
Note: l Standard ; Option - NA

# 14/18WS Rated Capacities Graph



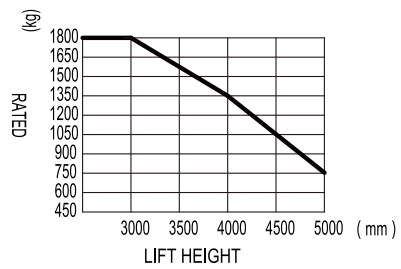
RATED CAPACITIES GRAPH

14WS



RATED CAPACITIES GRAPH

18WS



## Mast Option

### 14WS / 18WS

Mast Types	Lift h3+h13 (mm)	Lowered mast height h1 (mm)	Free lift h2 (mm)	Extended mast height h4 (mm)
Duplex ZT	2640	1835	150	3555
	3000	2018	150	3915
	3200	2118	150	4115
	3590	2303	150	4505
Triplex DZ	4000	1822	907	4915
	4500	2022	1107	5415
	4800	2122	1207	5715
	5000	2187	1272	5915

## Options

Options	14WS	18WS
3 Fork length	1070	1070
4 Fork width	200-760(adjustable)	200-760(adjustable)
10 Driving wheel	PU ; Rubber Wheel	PU
11 Balance wheel		
15 Cold storage		
16 Mast screen		
17 Battery Indicator with hour meter		
18 Battery Indicator without hour meter		
19 Battery capacity	;280AH ;280AH (Maintenance-free)	;360AH ;280AH (Maintenance-free)
20 Lateral change battery		
22 Water auto-filling system		
25 Vertical handler working		
26 Proportional lifting		
27 Height limitation		
30 Side shift		
31 Half soeed function in turning	-	-
32 Guard arm	-	-

Note: | Standard ; Option - NA



Hyundai Tower, Level 1, 394 Lane Cove Road,  
Macquarie Park NSW 2113  
Phone: 1300 760 030  
[info@hyundai-materialhandling.com.au](mailto:info@hyundai-materialhandling.com.au)  
[www.hyundai-materialhandling.com.au](http://www.hyundai-materialhandling.com.au)